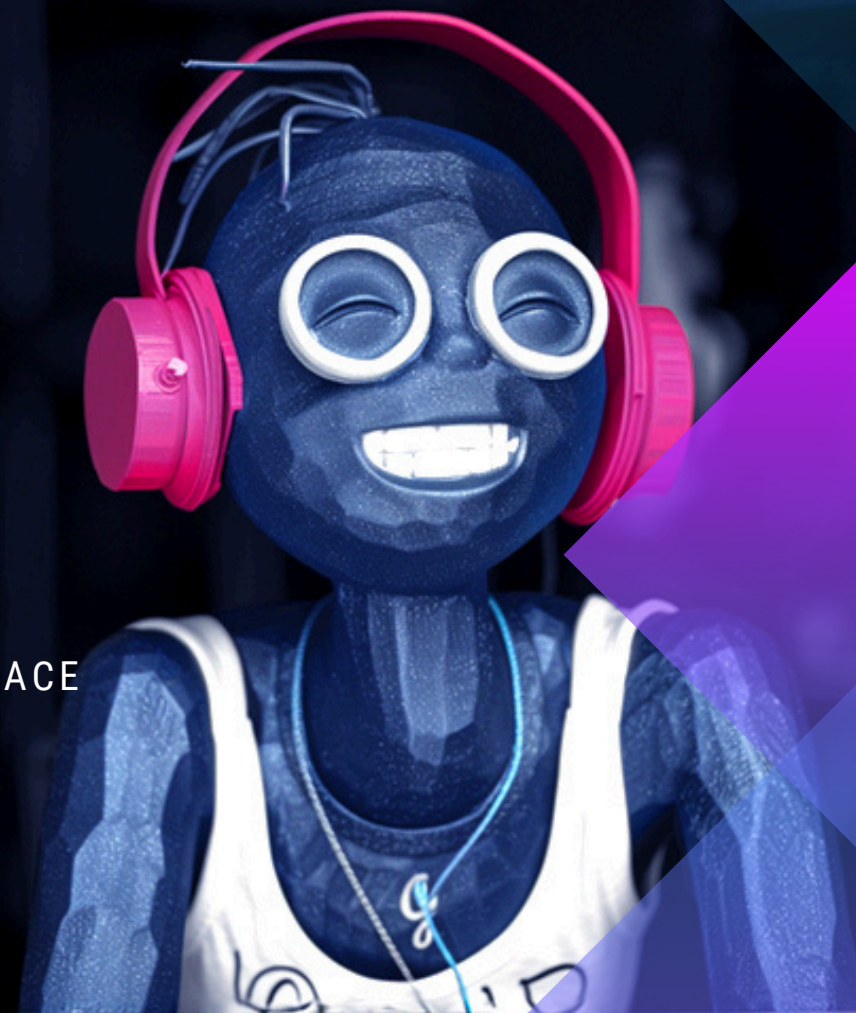


Not So
Artificial

WELCOME PRACTICAL *AI*

NAVIGATING CAREERS AND NEW OPPORTUNITIES IN TODAY'S WORKPLACE



Amanda Farris AI COLLABORATOR

Chad White AI ENTHUSIAST



Not So
Artificial

TODAY'S FUN

WHY?
↓

How are you using AI?



AI in Today's Landscape

01

Multimodal Generative AI

Integrating text, speech, and images into multimodal language models from text-based generative AI.

02

Addressing Pain Points

Alleviates numerous challenges that arise between us and technology, unlocking greater human potential.

03

AI-driven data centers and cybersecurity automation

AI is beginning to take charge, and it's possible that entire networks of AI agents will soon oversee significant facets of business. Ensuring proper human supervision is essential; we must collectively rethink the future of technology and talent.

04

A match made in AI

People are turning to generative AI chatbots for information, revolutionizing today's search industry and shaping the future of software and data-centric businesses.



What **WE** See

01

Transforming How We Engage with Knowledge

The traditional "librarian" model of human-data interaction, where searches are conducted to curate results, is evolving into a new "advisor" model. Instead of running searches, people are now consulting generative AI chatbots for direct answers.

03

Identifying and Reducing Risks

Consider the "hallucinations," a nearly inherent feature of large language models. It is crucial to safeguard proprietary data diligently.

02

Strengthening Your Data Infrastructure

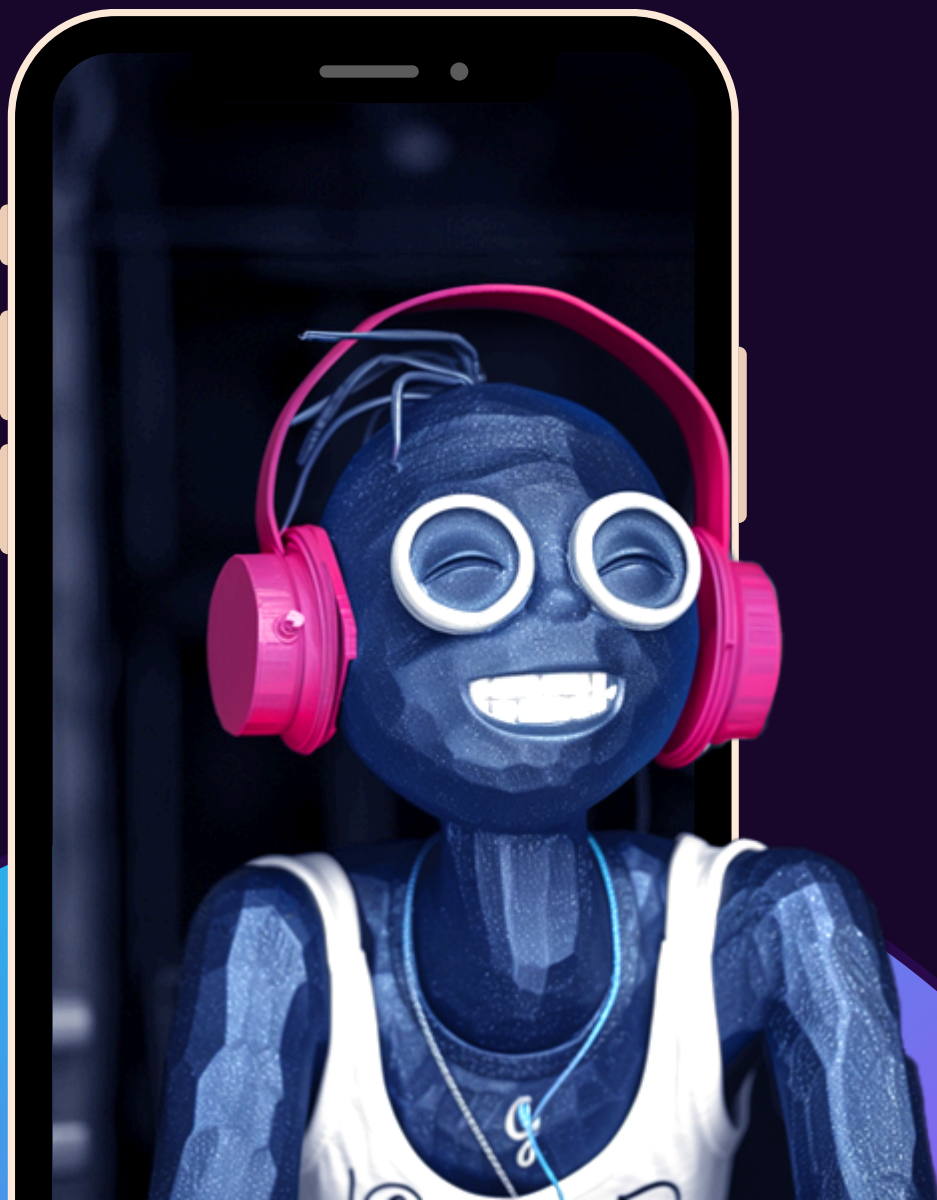
Companies have the option to develop their own large language models (LLMs) from the ground up, but this is uncommon due to the extensive resources needed. Alternatively, businesses can fine-tune an existing LLM. Additionally, there is a growing trend among enterprises to fine-tune smaller language models (SLMs).

04

Security Implications

Some public institutions may not be able to adopt open source solutions due to these risks.





AI unleashes the next level of human potential

"Early adopters and leading businesses have kick-started a race toward a new era of value and capability. And their strategies are underpinned by one common thread — the technology is becoming more human"

-accenture.com

- **Remote support**
- **Innovate with purpose**

"95% of executives believe generative AI will compel their organization to modernize its technology and support infrastructure, and that making technology more human will massively expand the opportunities of every industry."

"93% of executives agree that with rapid technological advancements, it is more important than ever for organizations to innovate with purpose."

Full Report: <https://www.accenture.com/content/dam/accenture/final/accenture-com/document-2/Accenture-Tech-Vision-2024.pdf#zoom=40>



NEW OPPORTUNITES

Mission

Adapt your skills to be the leader in your company and find ways to streamline your workflow - work smart not hard.

Vision

Humans will not become obsolete. Operating these programs, updating applications, and crafting prompts will still necessitate human involvement. Given the pace of technological advancements, it is increasingly vital for organizations to innovate intentionally.

Creativity

Identify individuals capable of linear thinking, as they can be a valuable new asset to the team, enhancing strategic decision-making and problem-solving.



FAVORITE **AI** PROGRAMS

01

OPEN AI

ChatGPT | Dalle | SORA
Build your own extension

04

CANVA.AI

Generate in Canva

07

**MICROSOFT/BING
IMAGE GENERATOR**

Image generator

02

MIDJOURNEY

Lives in Discord
Browser Format

05

BALTO

AI Call Center Tools

08

PHOTOSHOP

Generative Fill

03

META.AI

Free to use
Generates as you prompt
Meta Ray-Ban Glasses

06

BLACKBOX.AI

Software/Code
Web development

09

GEMINI

Worth Noting



TEAM *EXPERIMENT*

Task: Choose a common theme or invent a product and ask your team to create an advertisement, business proposal or go to market strategy using only AI tools. Observe how diverse the projects turn out based on each team member's unique approach.

Objective: This exercise will help you identify various work styles and cognitive strategies among your employees, enabling you to better align their skills with their roles. Leveraging AI tools can significantly boost productivity and outcomes, so why not integrate these resources across your organization?

This is a fun and professional way to explore the potential of AI within your team while fostering a spirit of creativity and collaboration!

Let's begin!



Not So
Artificial



NOW FOR THE
FUN STUFF

